

# Replacing Staples

## (100-sheet Staple Finisher)

When the Staple Unit runs out of staples, the following messages will be displayed. The staple cartridge holder need to be replenished with staples.

"Staple is empty."

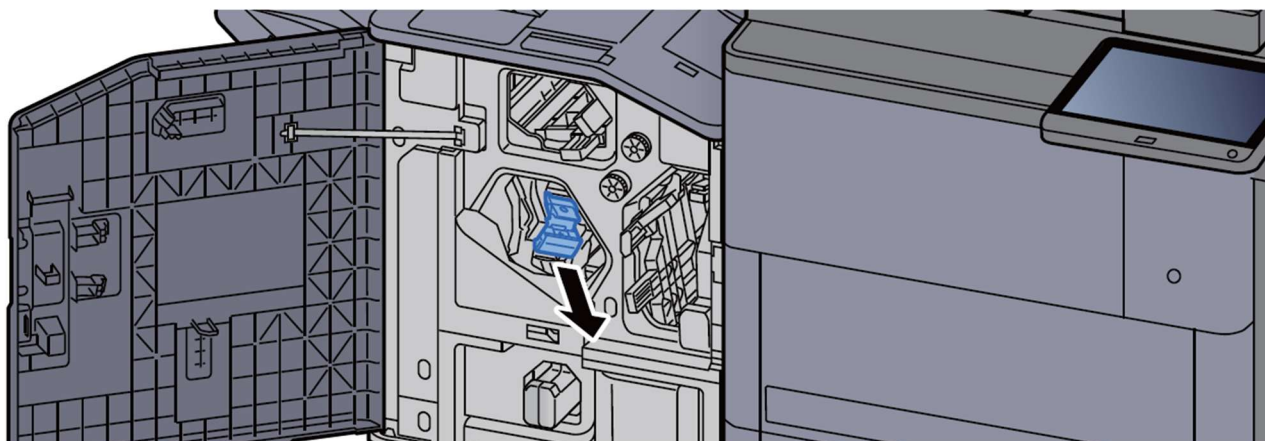
### NOTE

If the Staple Unit runs out of staples, contact your dealer or service representative.

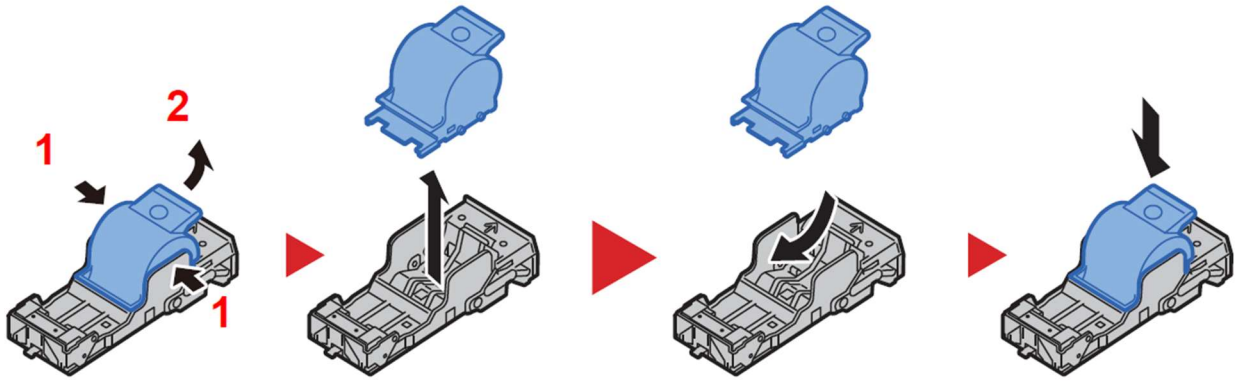
## 1 Open the finisher front cover 1.



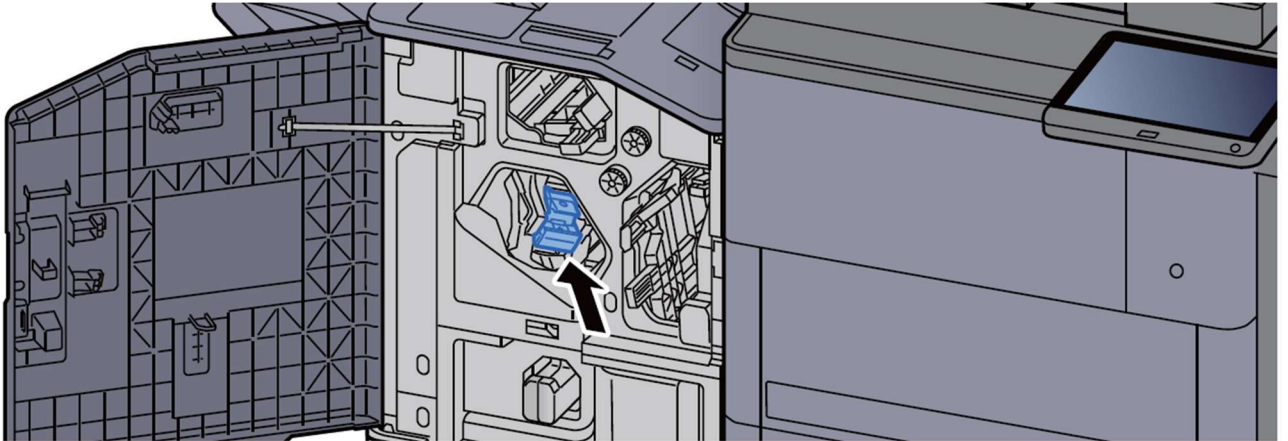
## 2 Remove the Staple Cartridge Holder (A).



**3** Replace the staples.



**4** Install the Staple Cartridge Holder (A).



**5** Close the cover.

