

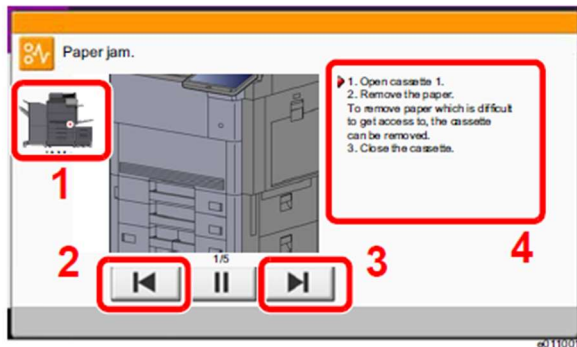
Clearing Paper Jams

If a paper jam occurs, printing stops and the location at which the paper jam has occurred and the following message appear on the touch panel.

"Paper Jam."

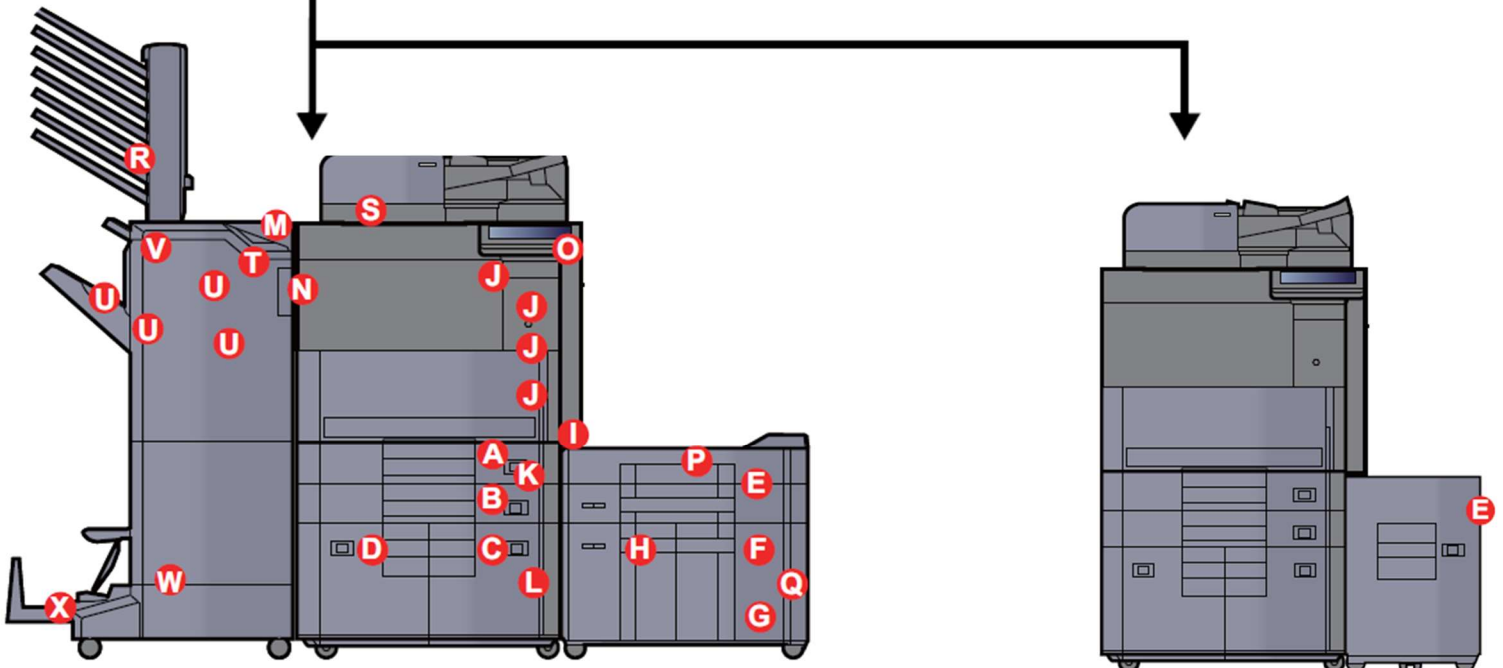
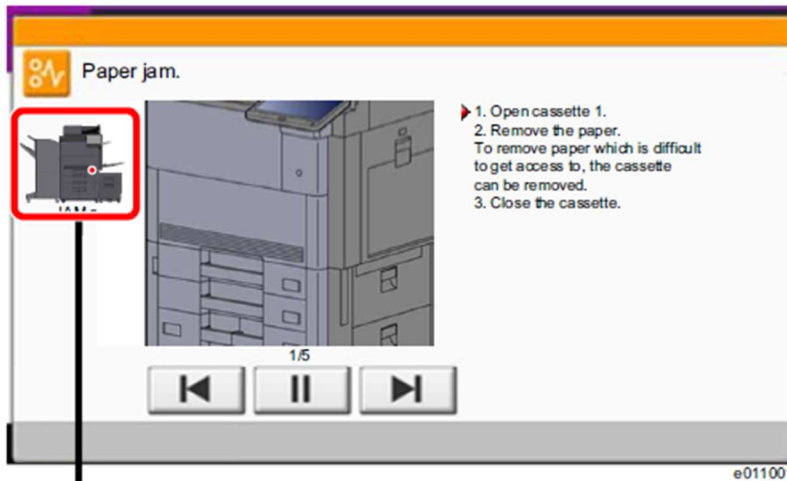
Refer to these procedures to remove the jammed paper.

Jam Location Indicators



- 1 Shows the location of a paper jam.
- 2 Shows the previous step.
- 3 Shows the next step.
- 4 Shows the removal procedure.

If a paper jam occurs, the location of the jam will be displayed on the touch panel as well as the clearing instructions.



Paper Jam Location Indicator	Paper Jam Location
A	Cassette 1
B	Cassette 2
C	Cassette 3
D	Cassette 4
E	Cassette 5 (Side Feeder (3,000-sheet))
	Cassette 5 (Side Feeder (500-sheetx3)/Large Capacity Side Feeder (500, 1,500-sheetx2))
F	Cassette 6 (Side Feeder (500-sheetx3))
	Cassette 6 (Large Capacity Side Feeder (500, 1,500-sheetx2))
G	Cassette 7 (Side Feeder (500-sheetx3))
H	Cassette 7 (Large Capacity Side Feeder (500, 1,500-sheetx2))
I	Multipurpose Tray
J	Right Cover 1
K	Right Cover 3
L	Right Cover 4
M	Upper Left Tray/4,000-Sheet Finisher/100-sheet Staple Finisher (Tray C)
N	Lower Left Tray
O	Right Tray
P	Top Cover, Right Cover 1 (Side Feeder (500-sheetx3)/Large Capacity Side Feeder (500, 1,500-sheetx2))
Q	Right Cover 2 (Side Feeder (500-sheetx3)/Large Capacity Side Feeder (500, 1,500-sheetx2))
R	Mailbox
S	Document Processor
T	4,000-Sheet Finisher/100-sheet Staple Finisher (Inner)
U	4,000-Sheet Finisher/100-sheet Staple Finisher (Tray A)
V	4,000-Sheet Finisher/100-sheet Staple Finisher (Tray B)
W	Folding Unit
X	Folding Tray