

# Toner Container Replacement

When toner runs low, "Toner is low. (Replace when empty.)" appears in the touch panel. Make sure you have a new toner container available for replacement.

When the touch panel displays "Toner is empty.", replace the toner.



## NOTE

- To maintain quality, we recommend using genuine Kyocera toner containers, which must pass numerous quality inspections.
- The memory chip in the toner container of this product stores information necessary for improving customer convenience, operation of the recycling system for used toner containers, and planning and development of new products. The stored information does not include information that makes it possible to identify individuals, and is only used anonymously for the above purposes.



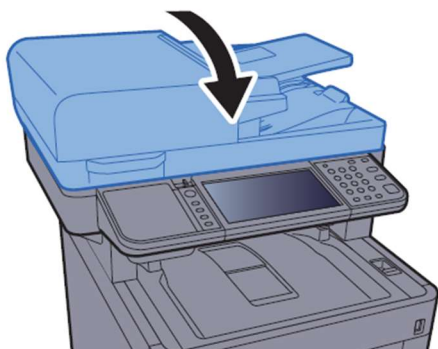
## CAUTION

Do not attempt to incinerate parts which contain toner. Dangerous sparks may cause burns.

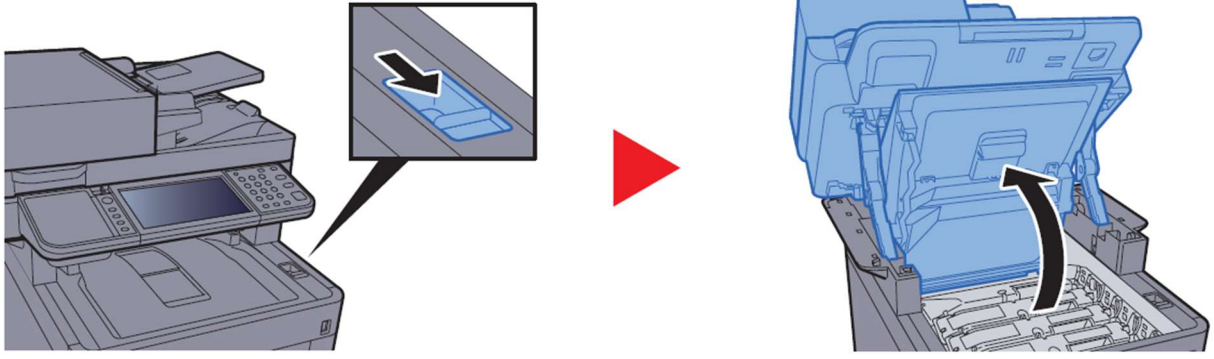
## Replacing the Toner Container

Installation procedures of the toner container is same for every color. The procedures here represent the yellow toner container.

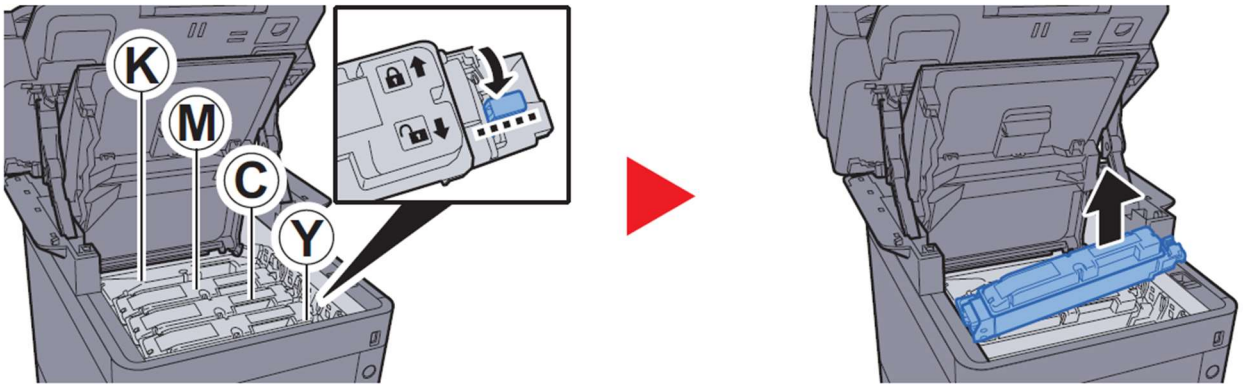
1



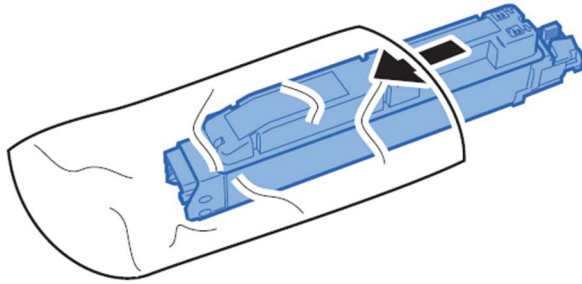
2



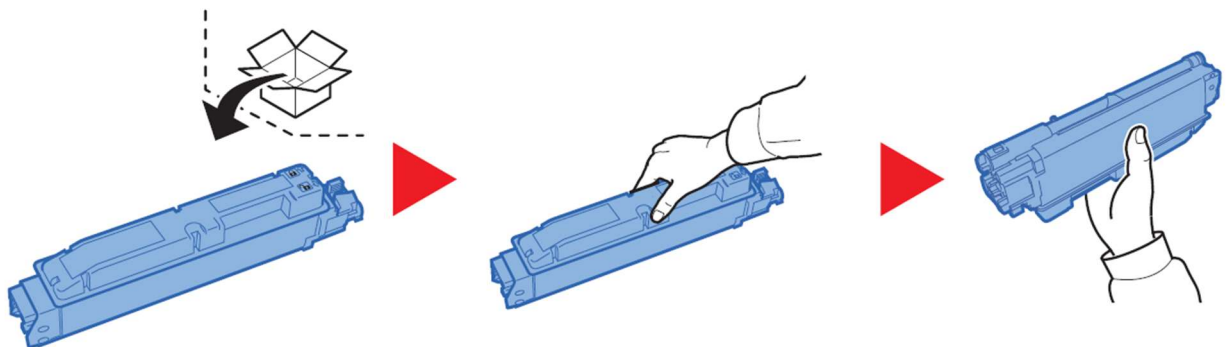
3



4

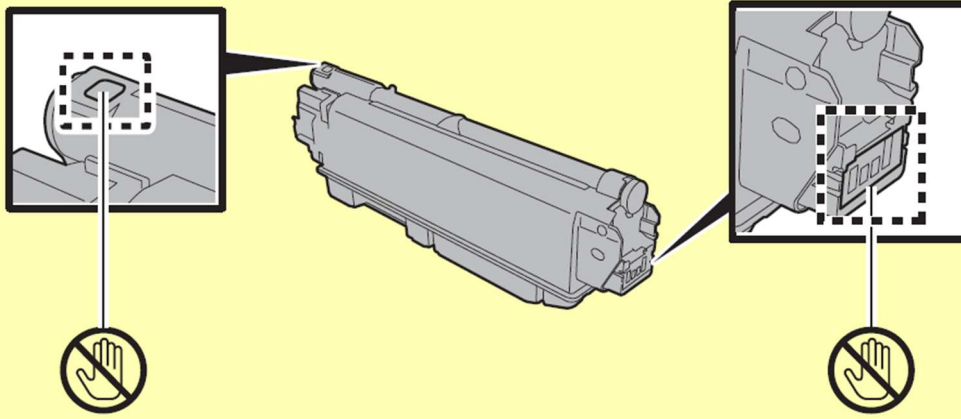


5

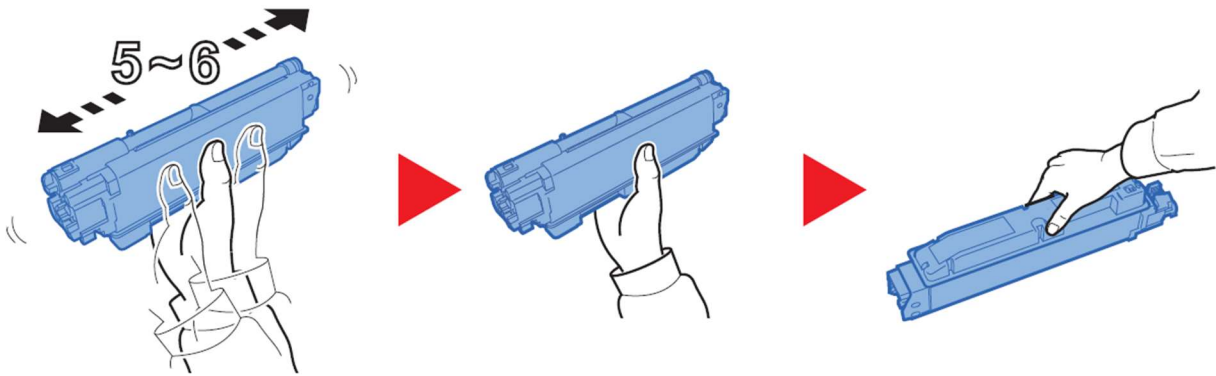


✔ IMPORTANT

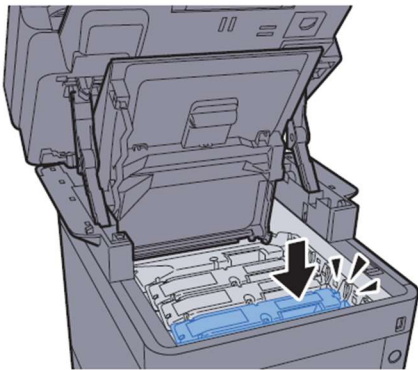
Do not touch the points shown below.



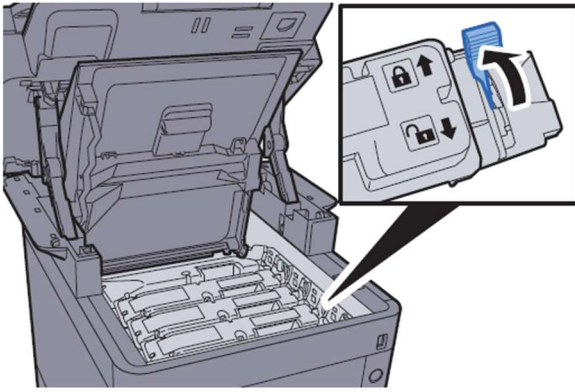
6



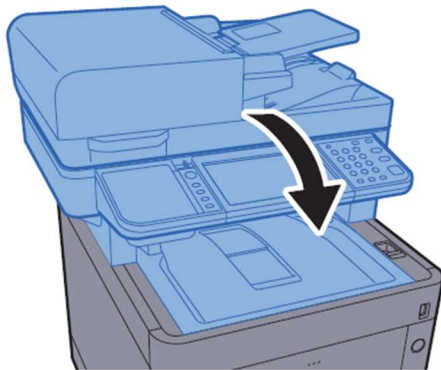
7



8



9



**NOTE**

- If the Scanner Unit does not close, check that the new toner container is installed correctly (in step 7).
- Return the exhausted toner container to your dealer or service representative. The collected toner container will be recycled or disposed in accordance with the relevant regulations.