

Toner Container Replacement

When toner is empty, the following message will be displayed. Replace the toner container.

"Toner [C][M][Y][K] is empty."

When toner runs low, the following message will be displayed. Make sure you have a new toner container available for replacement.

"Toner [C][M][Y][K] is low. (Replace when empty.)"

NOTE

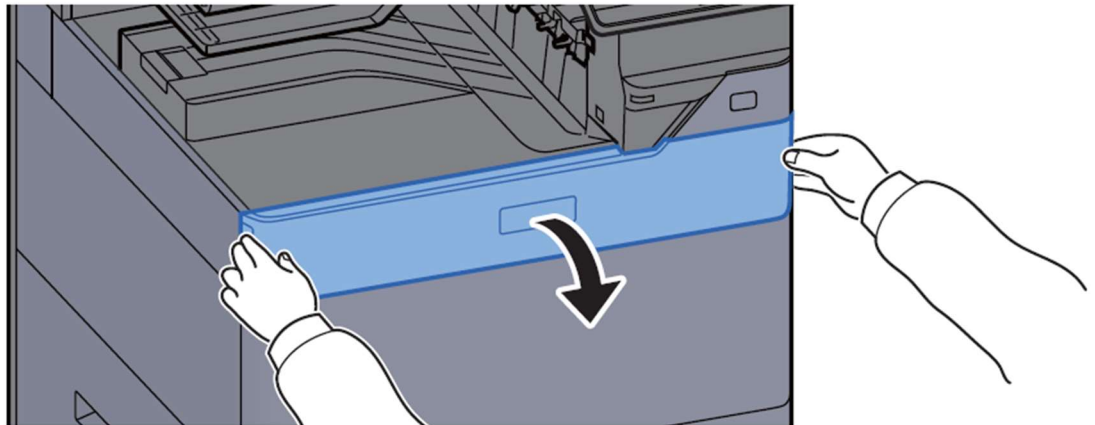
- For the toner container, always use a genuine toner container. Using a toner container that is not genuine may cause image defects and product failure.
- The memory chip in the toner container of this product stores information necessary for improving customer convenience, operation of the recycling system for used toner containers, and planning and development of new products. The stored information does not include information that makes it possible to identify individuals, and is only used anonymously for the above purposes.

CAUTION

Do not attempt to incinerate parts which contain toner. Dangerous sparks may cause burns.

Installation procedures of the toner container is same for every color. Here, we'll explain the procedures for the yellow toner container, as an example.

1 Open the front cover.

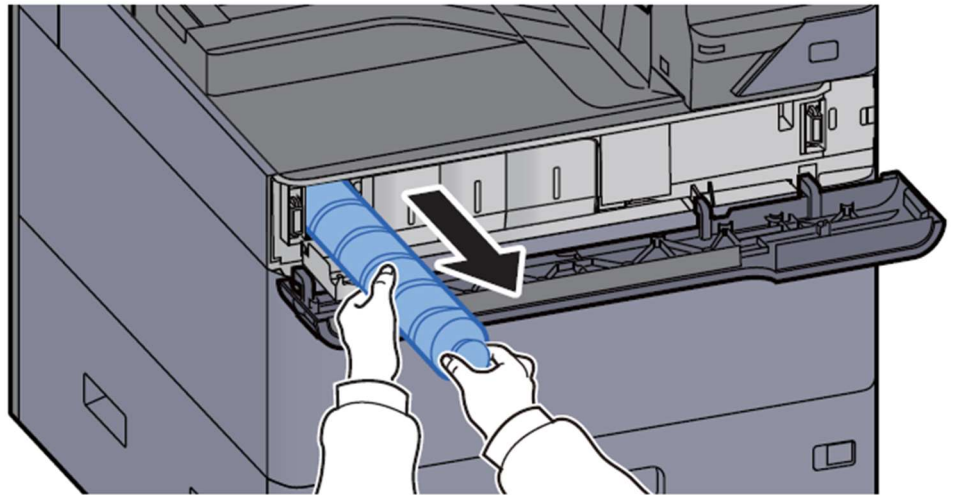


The cover of the empty toner container is open.

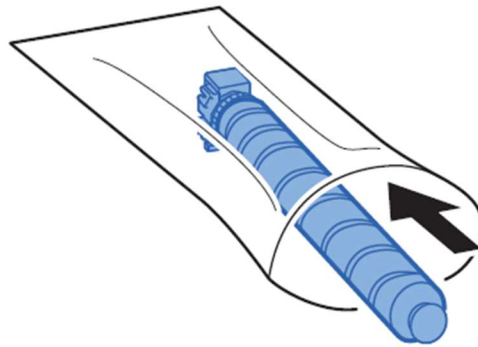
NOTE

If you close the toner container cover before replacing the container, select [**Open Toner Container Cover**].

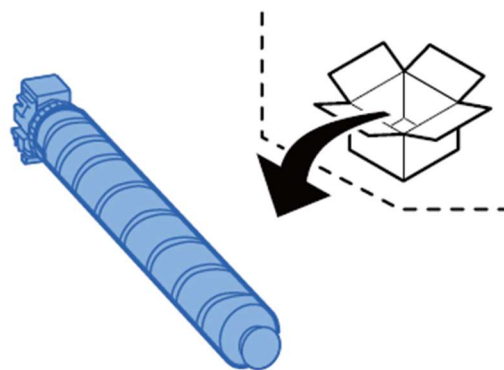
2 Remove the toner container.



3 Put used toner container into the plastic waste bag.

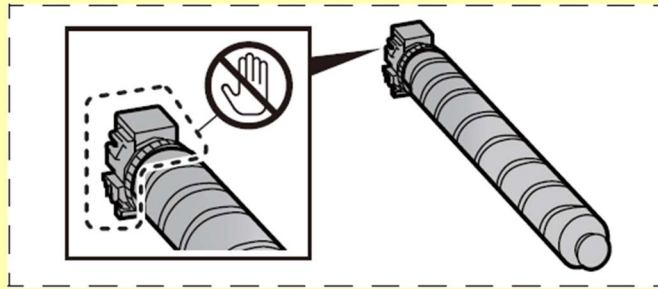


4 Remove the new toner container from the box.

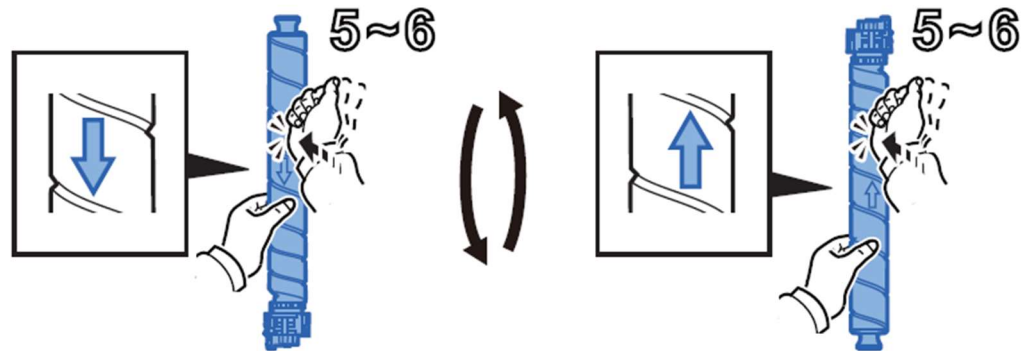


✔ **IMPORTANT**

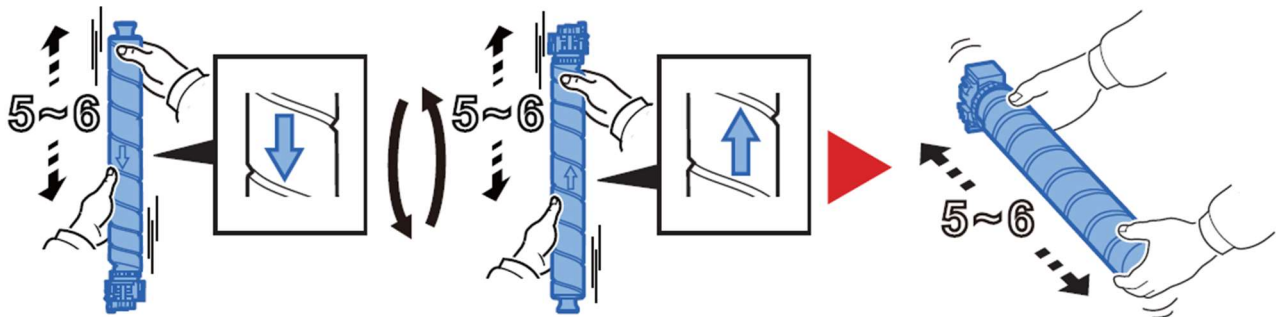
Do not touch the points shown below.



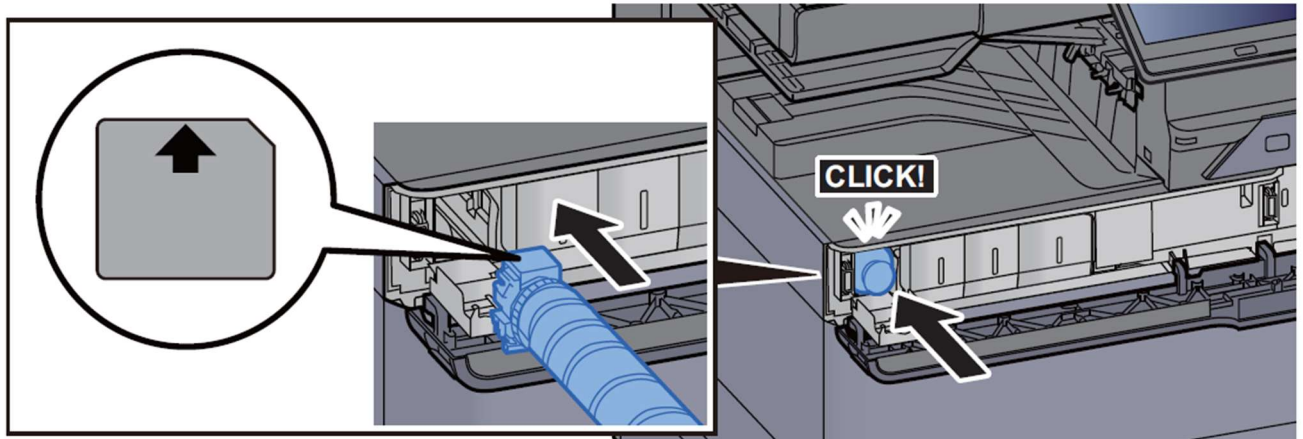
5 Tap the toner container.



6 Shake the toner container.



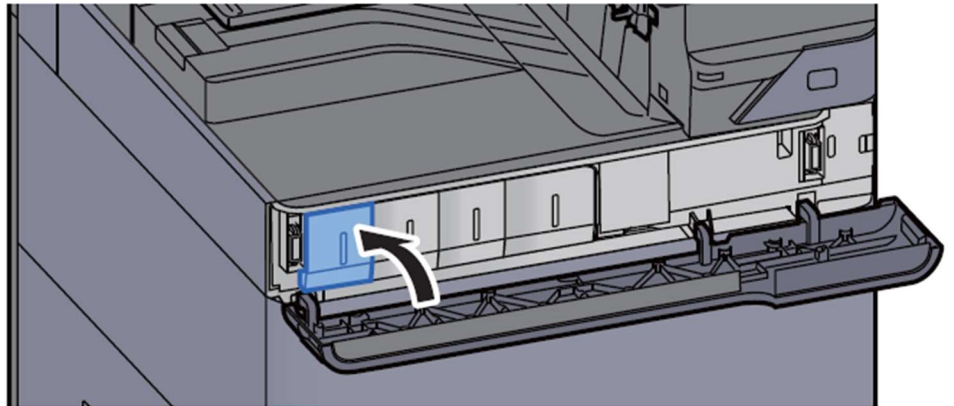
7 Install the toner container.



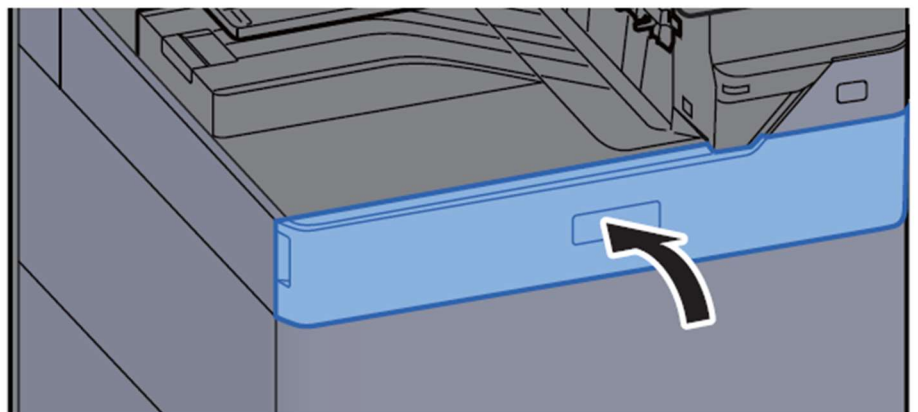
✔ **IMPORTANT**


Insert the toner container all the way.

8 Close the toner container cover.



9 Close the front cover.



 **NOTE**

- If the toner container cover or front cover does not close, check that the new toner container is installed correctly.
- Return the exhausted toner container to your dealer or service representative. The collected toner container will be recycled or disposed in accordance with the relevant regulations.